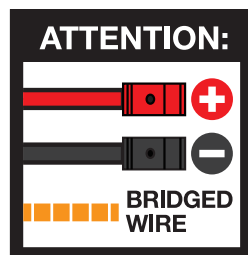
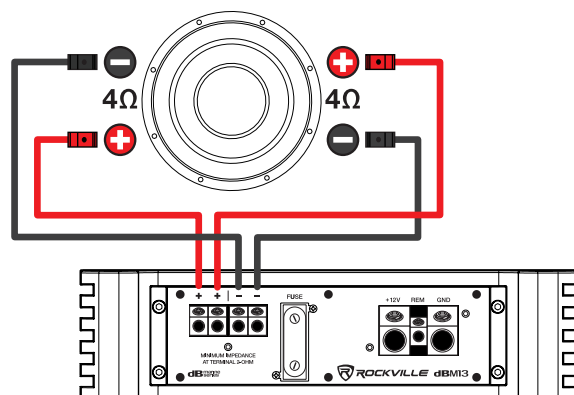
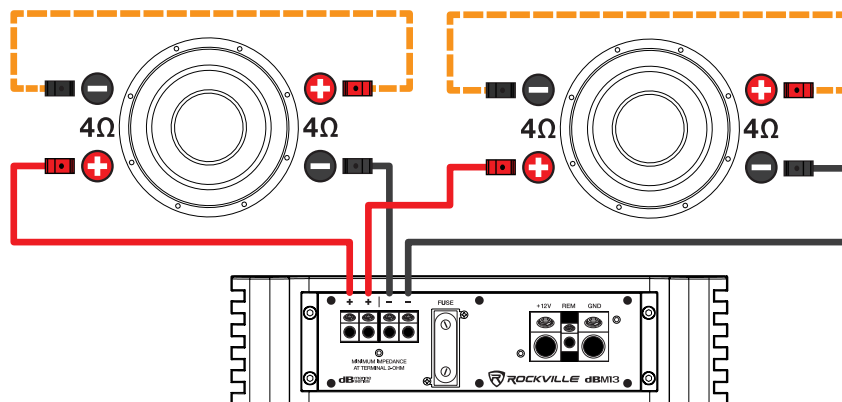


Wiring Diagrams

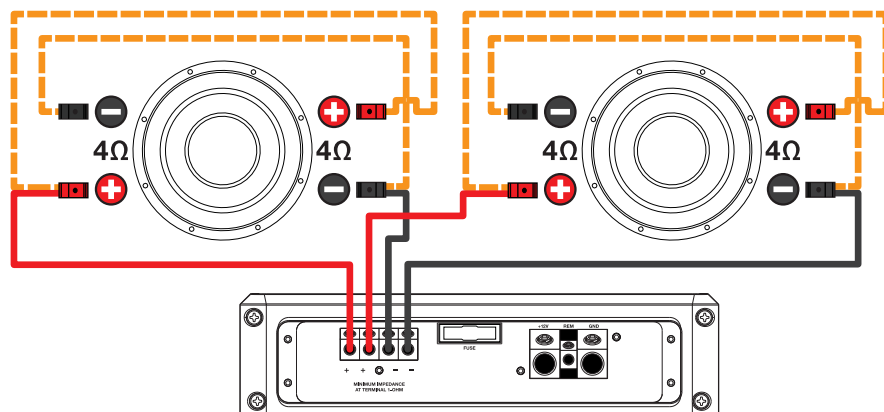
One 4 ohm DVC woofer with a 2 ohm load



Two 4 ohm DVC woofers with a 4 ohm load



Two 4 ohm DVC woofers with a 1 ohm load



ROCKVILLE

MS10L/MS12L MARINE/BOAT 10" and 12" FREE AIR SUBWOOFERS w/LEDs

OWNER'S MANUAL

ATTENTION:
WATCH THIS VIDEO BEFORE FIRST USE!

Who reads manuals?

Scan the **QR codes** or go to the **URLs** to access how-to video(s), the owner's manual, and other important information you may need to get the most out of your item.

If you prefer written instructions, please read ahead!

With Rockville you get many options.



rockvillesupport.com/ms10lw



rockvillesupport.com/ms10lb



rockvillesupport.com/ms12lw



rockvillesupport.com/ms12lb

Missing items? If you ordered a bundle that includes more than one product and you are missing part of your bundle, then it just means your order shipped from two different warehouses. You will receive the remaining items very soon. If you have any concerns or inquiries, feel free to call our customer support center at 1-646-758-0144, 24 hours a day/7 days a week.

The Rockville MS-L series marine subwoofer is one of the most powerful on the market. What really makes this sub stand out is the sound quality and durability. The frequency range of these subs is so good that it will make all your songs sound so much better! These play frequencies that normal full range speakers cannot hit adding depth and richness to all your music. We added an awesome LED lighting effect to these subs to really make your system shine. The MS-L series subwoofer was designed in a molded ABS plastic basket made with a special blend that is waterproof and un-breakable.

Using only true marine grade components and materials, the MS-L series subwoofers are fully marinated against salt & fresh water conditions. These subs are completely waterproof and protected from the elements! They are UV treated and have a special waterproof coating to prevent water damage.

Please read this guide carefully for proper use of your MS-L series marine subwoofer. Should you need assistance, please call our technical help line at 1-646-758-0144, 24 hours a day/7 days a week.

Features/Specifications

MS10L

- Max power: 2400 Watts
- RMS power: 600 Watts
- Injection Cone with Santoprene Surround
- 2" 4 Layer dual voice coil
- Molded ABS plastic basket made with a special blend that is water proof and unbreakable
- Cool LED lighting effect
- 80oz double stacked magnet
- Frequency response: 30Hz – 4kHz
- Impedance: Dual 4 ohms
- Sensitivity: 90dB
- Total diameter: 10.55"
- Cutout diameter: 9.0"
- Mounting depth: 5.6"
- Available in Black or White

MS12L

- Max power: 2800 Watts
- RMS power: 700 Watts
- Injection Cone with Santoprene Surround
- 2.5" 4 Layer dual voice coil
- Molded ABS plastic basket made with a special blend that is water proof and unbreakable
- Cool LED lighting effect
- 100oz double stacked magnet
- Frequency response: 20Hz – 4kHz
- Impedance: Dual 4 ohms
- Sensitivity: 90dB
- Total diameter: 12.8"
- Cutout diameter: 11"
- Mounting depth: 6.1"
- Available in Black or White

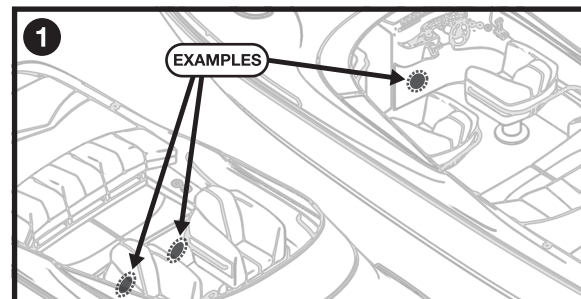
LED Wiring Instructions

1. Connect the red cable of the included LED power harness to your vessel's acc/ignition switch. You can also connect it to the remote terminal of your amp if it is nearby. This will turn the LEDs on or off when you power up or power down your radio/headunit. Connect the black cable to the negative terminal of your power supply.

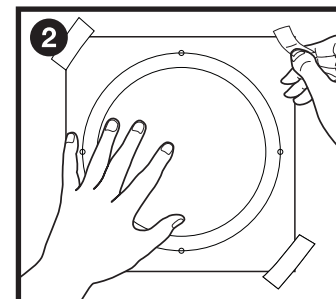
2. Connect the receptacle at the end of the harness to the corresponding receptacle protruding from the back of the subwoofer, near the terminals. Refer to step 6 of the installation instructions on the facing page.

CAUTION! DO NOT SHORT CIRCUIT THE LED OUTPUT, THIS MAY LEAD TO PERMANENT DAMAGE!

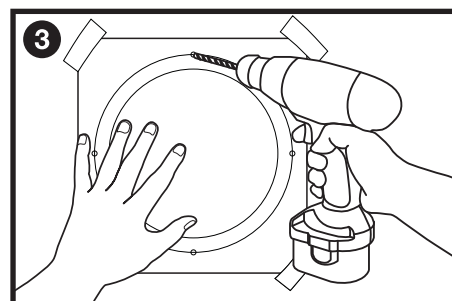
Subwoofer Installation



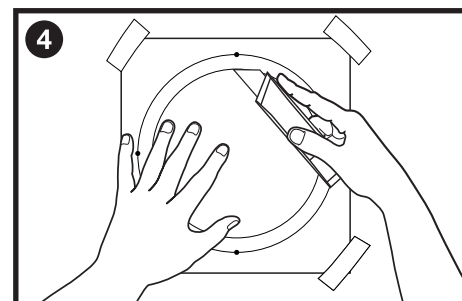
Find a mounting location that does not interfere with the safe operation of your vessel. For example, under the seat or the bow. Or, if the vessel is large, you can put two in different locations. Make sure the mounting screws will not puncture wiring harnesses, control cables, hydraulic lines, fuel lines, the fuel tank, or the hull. These may be located behind or under the mounting surfaces.



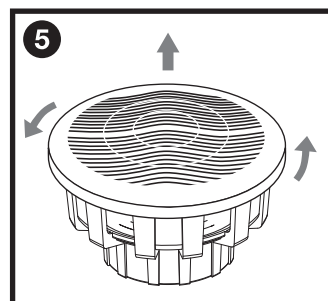
Create a mounting template using the provided measurements and place it on the desired surface. Use a drill to drill the holes for the mounting screws.



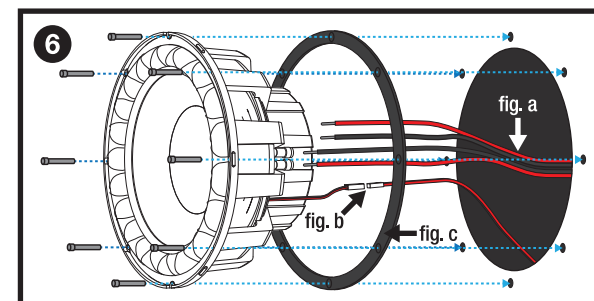
Use the drill to make the mounting holes, being careful to not rip the template.



Use a utility knife (pictured), jigsaw, rotary cutting tool, or other appropriate tool to cut out the mounting hole.



Remove the subwoofer's grill in order to expose the mounting holes. Simply press down, turn the cover counterclockwise (to the left) and carefully pull it up.



Connect your pre-routed speaker cables (fig. a) and LED power wires (fig. b) to the woofer (refer to the LED Wiring Instructions section on the facing page). Make sure to place the vibration dampening gasket (fig. c) as shown in the diagram. Insert the woofer into the mounting hole, align the mounting screw holes, insert the screws and tighten them. Do not over tighten. To replace the grill, place it upon the sub, press lightly, and carefully turn it clockwise (to the right).